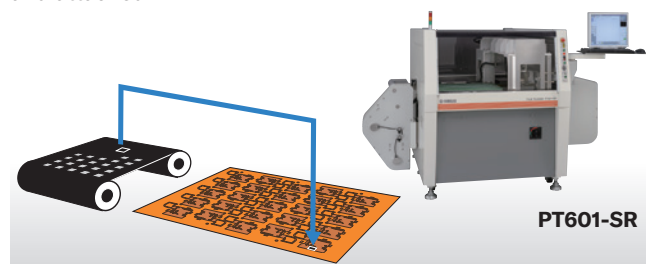


#### Automatic shielding film attaching machine

## FILM PLACER

A machine for attaching EMI shielding film onto flexible PCBs. With an accuracy of  $\pm 50\mu\text{m}$ , roll film is automatically punched and attached.



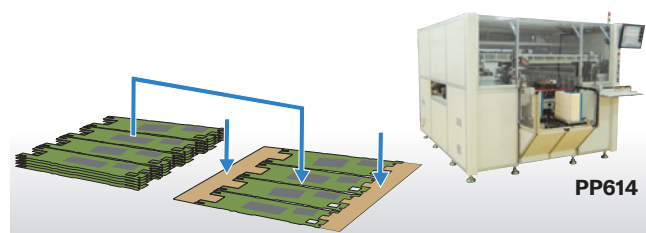
#### Specifications

Model	Accuracy	Worksheet size	Speed	Material supply
PT601-SR	$\pm 50\mu\text{m}$	610 × 510mm	1.5 s/piece	Roll

#### Automatic HDI PCB in-frame arraying machine

## PCB PLACER

A machine for automatically arraying HDI board pieces in the frame with high accuracy. With an arraying accuracy of  $\pm 30\mu\text{m}$ , an array for the mounting process is created.



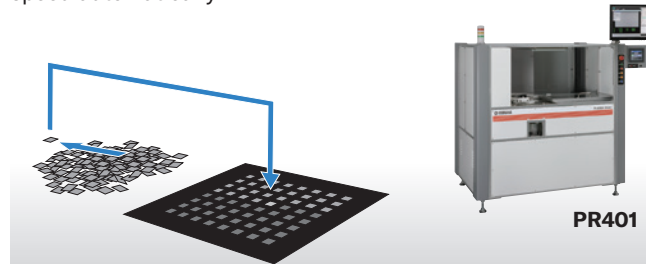
#### Specifications

Model	Accuracy	Workpiece size	Speed	Material supply
PP614	$\pm 30\mu\text{m}$	140 × 65mm	7.0 s/array	Automatic

#### Automatic small pieces arranging machine

## TRAY SETTER

A machine for arranging small-sized pieces such as stiffeners onto a tray. Chip boards of 3 to 15 mm are arranged at high speed automatically.



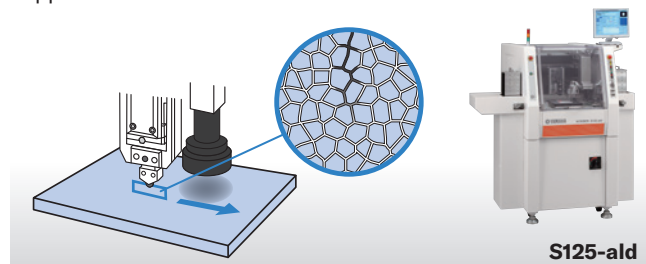
#### Specifications

Model	Accuracy	Workpiece size	Speed	Material supply
PR401-T	$\pm 200\mu\text{m}$	15 × 15mm	0.33 s/piece	Manual

#### Automatic ceramic substrate scribing machine

## SCRIBER

A machine automatically splitting ceramic substrate. With an accuracy of  $\pm 30\mu\text{m}$ , up to 230 x 230 mm in size can be supported.



#### Specifications

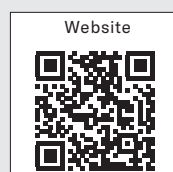
Model	Accuracy	Worksheet size	Speed	Material supply
S125-ald	$\pm 30\mu\text{m}$	125 × 125mm	500mm/s	Automatic
S230	$\pm 30\mu\text{m}$	230 × 230mm		Manual

# THE PRECISION MACHINES

## PRODUCT LINEUP

YAMAHA FINE TECHNOLOGIES CO., LTD.

FA Division  
 283, Aoya-cho, Minami-ku, Hamamatsu, 435-8568, Japan  
 TEL +81-53-467-3601 FAX +81-53-467-3613



URL <https://www.yamahafinetech.co.jp/en/>

The contents of this catalog are subject to change without notice.

YAMAHA FINE TECHNOLOGIES CO., LTD.

# PCB TEST AND PROCESSING SOLUTIONS FROM YAMAHA

High-speed and high-precision Electronic Circuit Board Testing Machine

## MICRO PROBER

Industry-standard testing machines for electronic circuit boards achieving high productivity and contact accuracy simultaneously

Features

- High positioning accuracy  $\pm 5\mu\text{m}$  by Flying Fixture™ method
- Fully automated e-testing process
- Inspection function meeting high-level requirements

Specifications

Sheet by Sheet model

Model	Test points	Worksheet size	Fixture size	Loading / Unloading			
MR612-DM5S	Upper 2,046 / Lower 2,046	610 × 510mm	When rotating : ϕ200mm When not rotating : 275 × 100mm	Manual			
MR612-M5S	Upper 1,534 / Lower 1,022						
MR612-A-DM5S	Upper 2,046 / Lower 2,046	260 ×400mm		Automatic			
MR262-A-DM5S							
MR262-A-M5S	Upper 1,534 / Lower 1,022			Manual			
MR262-M5S-N				Manual / Automatic			
MR262-M5S-U							
MR262C-M5S	Upper 1,534 / Lower 1,534	260 × 280mm	When rotating : ϕ200mm	Manual			
MR182-A-DM5	Upper 2,046 / Lower 2,046	120 × 250mm	When not rotating : 100 × 100mm	Automatic			

Roll to Roll model

Model	Test points	Worksheet size	Fixture size	Loading / Unloading
MR262-GFR-M5S	Upper 1,534 / Lower 1,022	100~260mm	When rotating : $\phi 200\text{mm}$	Roll to Roll
MR622-GFR-M5S	Upper 1,534 / Lower 896	350~620mm	When not rotating : 275 × 100mm	
MT512-GFR-N	Upper 1,022 / Lower 1,022	300~510mm	When not rotating : 600 × 500mm	

Standard specification

Open test	Test range	2-wire test	10Ω~10kΩ (0.5mA,10mA)	
		4-wire test	1mΩ~500Ω (10mA, 40mA, 100mA)	
	Open voltage	2-wire test	DC15~50V	
		4-wire test		
Short test	Test range	100kΩ~100MΩ		
	Open voltage	DC50V~250V		

High frequency characteristics measurement system

## NEW MICRO PROBER MP SERIES

Industry-leading systems that measure the frequency characteristics of high-speed transmission PCBs precisely and automatically

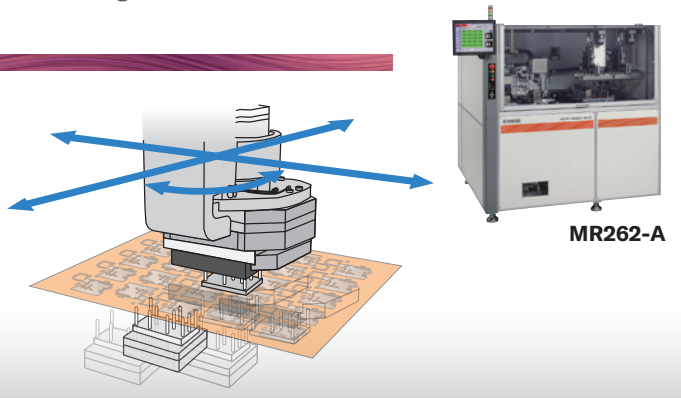
Features

- High repeatability and reproducibility
- High-speed, multi-piece-simultaneous test
- Can be combined with any network analyzers

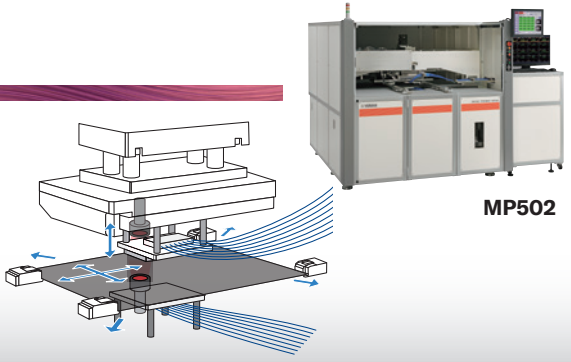
Specifications

\* Indicates repeatability of relative positioning of in-house performance tests.

Model	Positioning accuracy*	Worksheet size	Fixture size	Loading / Unloading
MP502	$\pm 20\mu\text{m}$	510 × 610mm	200 × 200mm	Manual
MP502-A				Automatic



MR262-A



MP502

High-speed and high-precision tooling hole puncher

## FILM PUNCHER

A wide range of sheet materials from thin to thick ones are supported. With an electric punching head, high-speed, high-accuracy punching is realized

Features

- Punching at high speed (12 holes/second) with high accuracy ( $\pm 20\mu\text{m}$ ) realized
- Model best suited for punching tooling holes for exposure and outline machining
- In addition to film materials, some thick sheet products also supported

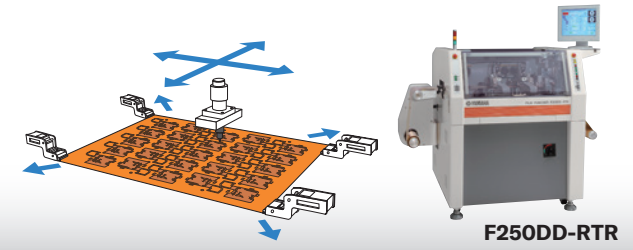
Specifications

Sheet by Sheet model

Model	Worksheet size	Punching head	Speed	Loading / Unloading
F602S2	545 × 365mm	Electric punch head	0.24 s/hole	Manual
F602SP2		NC punch head	0.35 s/hole	
F602L2	545 × 600mm	Electric punch head	0.27 s/hole	
F602LP2		NC punch head	0.35 s/hole	
F602S2-ald	500 × 365mm	Electric punch head	0.24 s/hole	Automatic
F602SP2-ald		NC punch head	0.36 s/hole	
F602L2-ald	500 × 600mm	Electric punch head	0.27 s/hole	
F602LP2-ald		NC punch head	0.35 s/hole	

Roll to Roll model

Model	Worksheet size	Punching head	Speed	Loading / Unloading
F250DD-RTR	width 250mm	Electric punch head	0.08 s/hole	Nip roll feeding
F250DD-GFR			0.085 s/hole	Grip feeding
F500DC-RTR	width 500mm		0.11 s/hole	Nip roll feeding
F500DC-GFR			0.115 s/hole	Grip feeding



F250DD-RTR

High-precision outline cutting and Irregular hole puncher

## TRIM PUNCHER

Used for film materials for such work sheets as FPCs and touch panels. Metal die punching and half-cutting are also supported.

Features

- $\pm 20\mu\text{m}$  high-accuracy punching by image alignment
- Low-cost irregular hole punching using a compact die
- Both half-cutting type and die supported

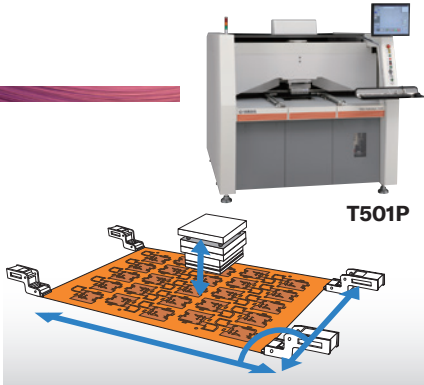
Specifications

Sheet by Sheet model

Model	Worksheet size	No. of head	Thrust	Loading / Unloading
T501	510 × 510mm	1 head	1.2t	Manual
T502		2 head	0.6t	
T501P	510 × 610mm	1 head	5t	Automatic
T501P-HA				
T901	900 × 900mm		7t	Manual

Roll to Roll model

Model	Worksheet size	No. of head	Thrust	Loading / Unloading
T151-RTR	Width 158mm	1 head	2t	Roll to Roll
T261-GFR	Width 260mm		3t	Roll to Roll



T501P

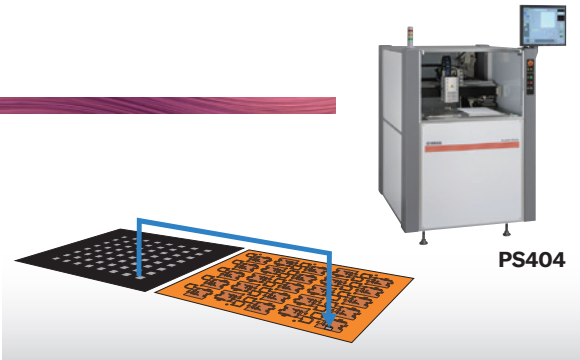
Automatic stiffener attaching machine

## PLACER

A machine for attaching stiffeners onto flexible PCBs. With an accuracy of  $\pm 50\mu\text{m}$ , stiffeners are attached at high speeds and automatically.

Specifications

Model	Accuracy	Worksheet size	Speed	Material supply
PS404-TV	$\pm 50\mu\text{m}$	250 × 400mm	1.1 s/piece	Tray
PS404-FV		260 × 400mm	1.3 s/piece	Tape Feeder
PS504		300 × 500mm	1.5 s/piece	Magazine



PS404